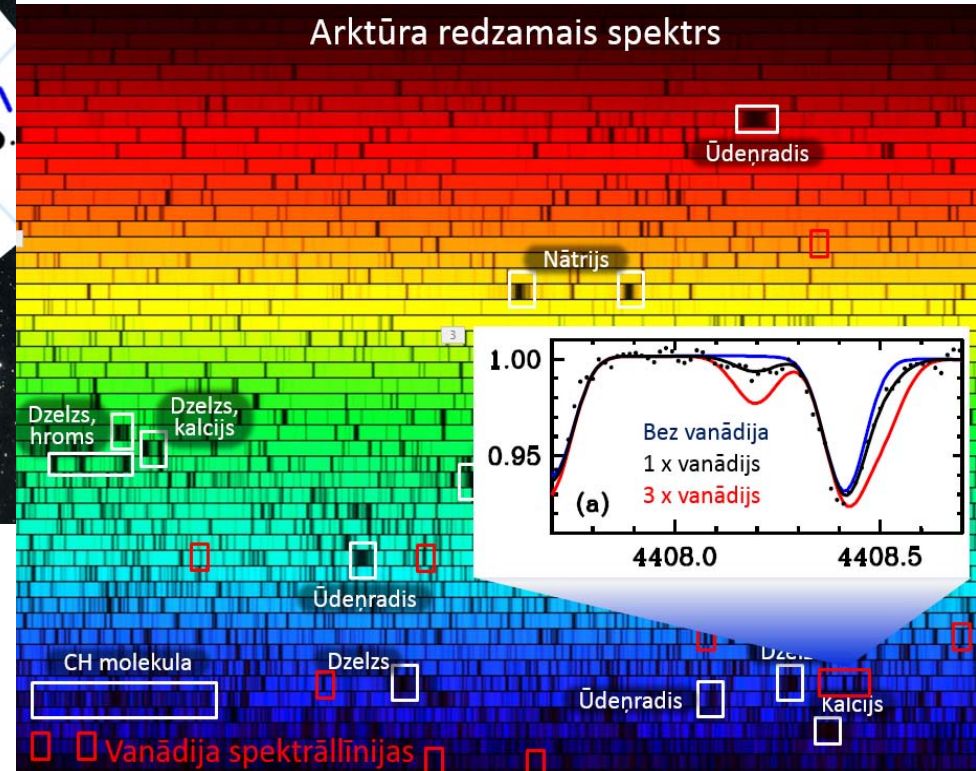
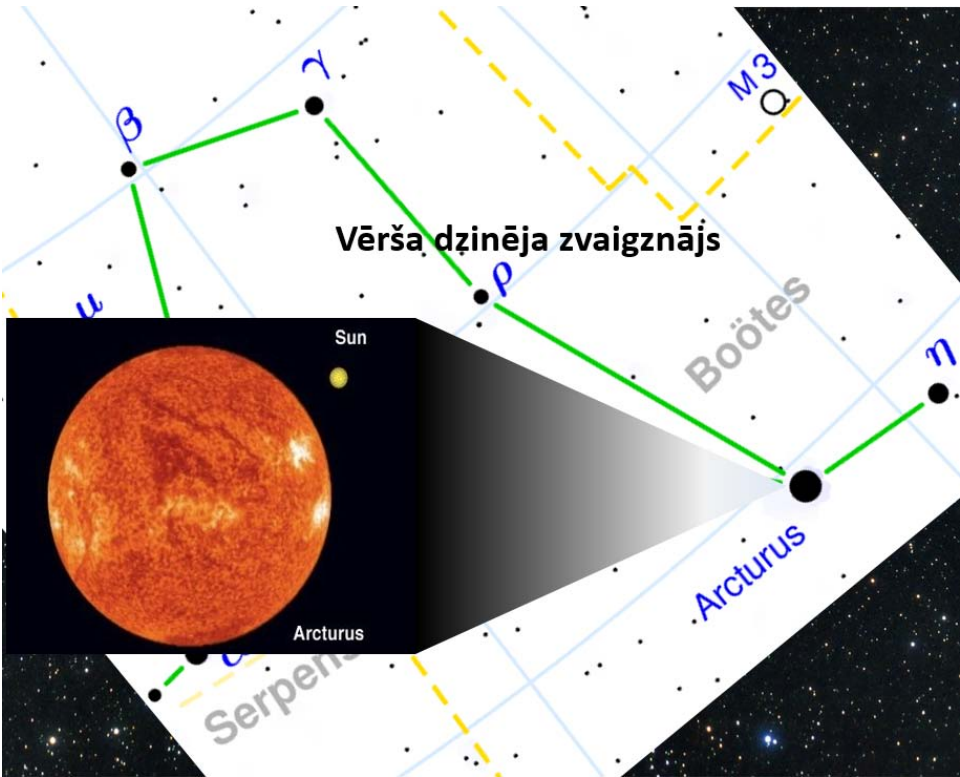
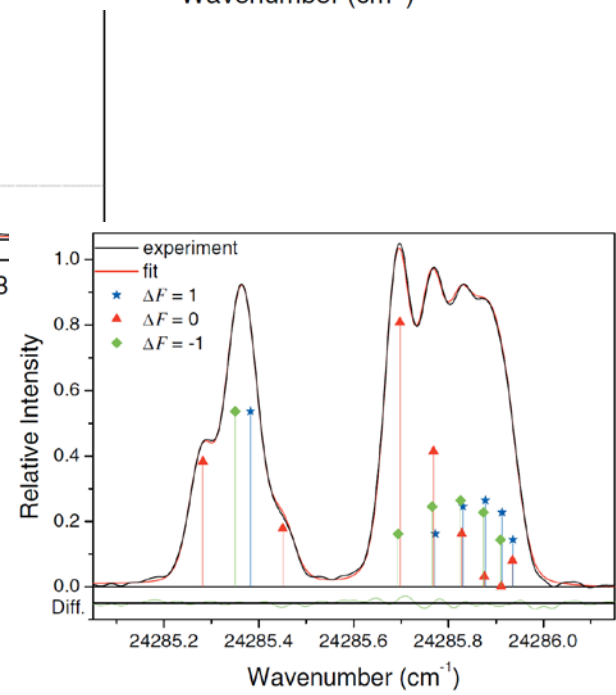
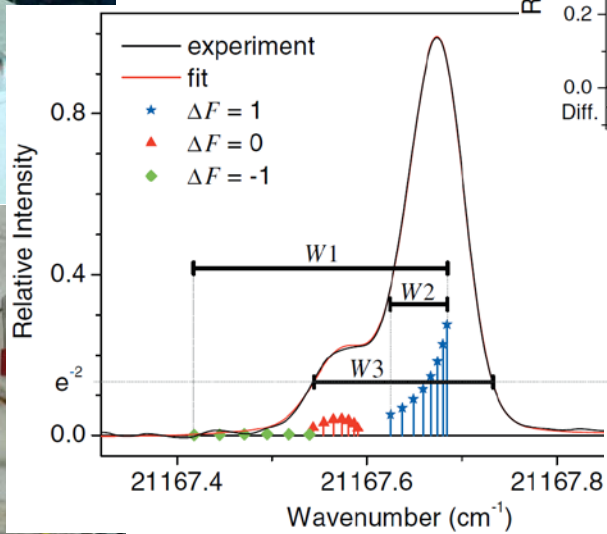
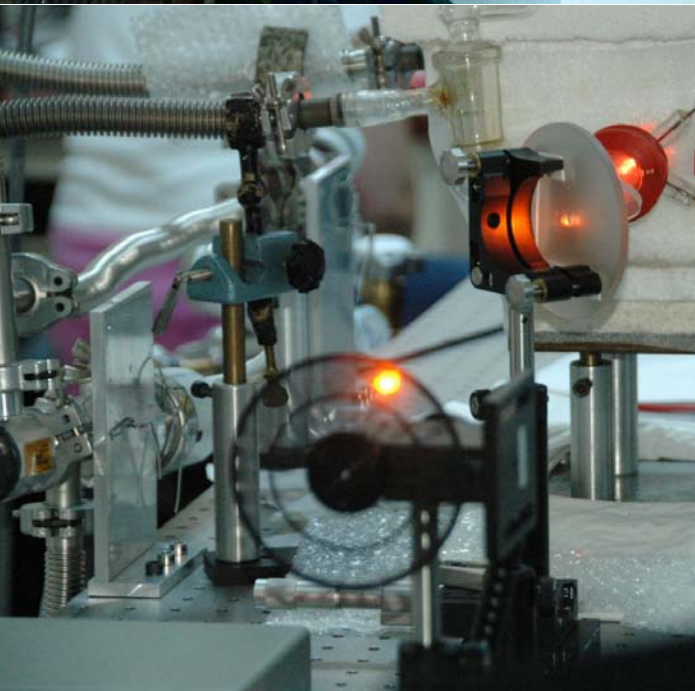
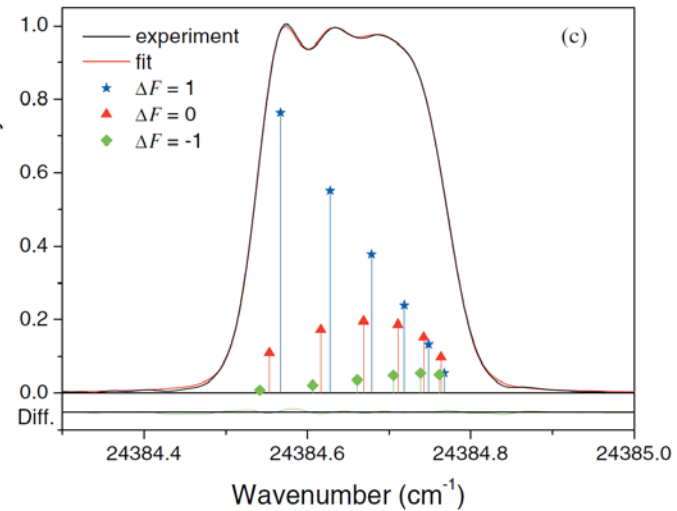
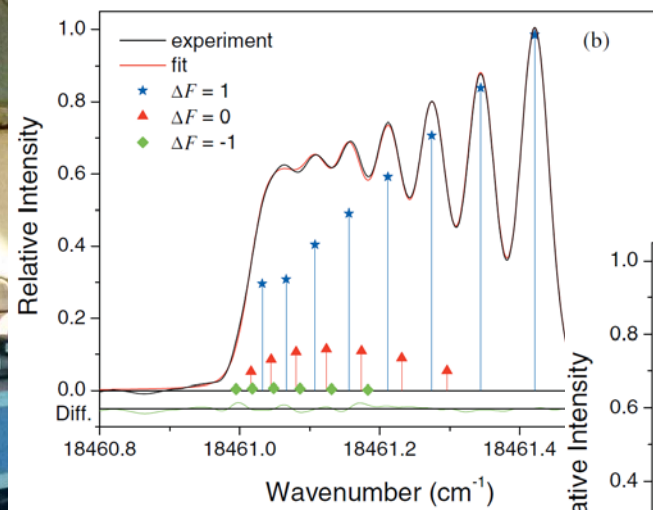


Izstrādāta jauna iespēja precizēt astronomisko objektu sastāvu un hronoloģiju

Akadēmiķis R.Ferbers, Dr. Habil. phys. M.Tamanis, Mg. A.Krūziņš, Dr. D.Docenko





Pētījuma autori

M.Tamanis, A.Krūziņš, R.Ferbers (LU FMF Lāzeru centrs) D. Docenko (Astronomijas institūts)



İ. K. Öztürk^a, G. Başar^a, S. Kröger^b, A. Er^a, F. Güzelçimen^a
^aStambulas Universitāte, ^bBerlīnes Tehnikas un Ekonomikas augstskola

